

ALPHA MEAD DEVELOPMENT COMPANY



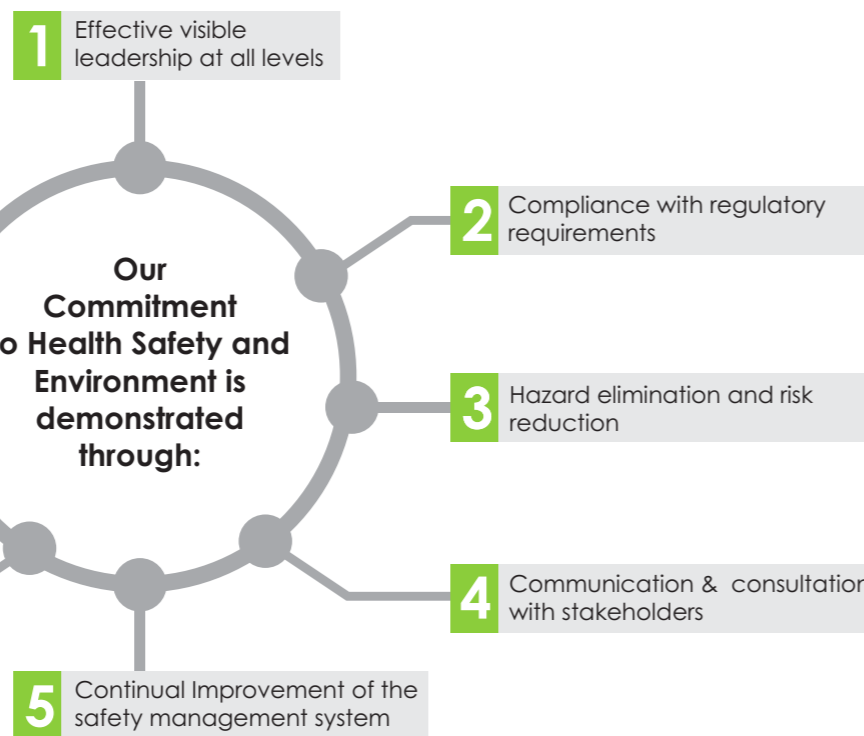
AMDC/MGT/QHSE/POS/101 REV 00

HSE POLICY STATEMENT

Our Commitment

Alpha Mead Development Company is committed to providing a safe & healthy work environment to everybody who plays a part in our operations, lives in the communities where we operate or uses our services.

Wherever we operate, we will conduct our business with respect and care for the environment and systematically manage risks to drive sustainable business growth. We will not be satisfied until we succeed in eliminating all injuries, occupational illnesses, unsafe practices and incidents of environmental harm from our activities. This policy is appropriate to the context of our organization.



Our Expectations

Through implementation of this policy, **Alpha Mead Development Company** seeks to earn the public's trust and to be recognized as a leader in HSE performance.

QUALITY POLICY STATEMENT

- Alpha Mead Development Company is a real estate development and advisory firm with strong focus on providing service to middle tier income group in the area of estate development, asset management and real estate advisory. **This policy is appropriate to the scope and nature of our operations; the context of our organization and supports its strategic direction.**
- **This policy statement shall provide a framework for the establishment and reviewing of the quality objectives** which shall be developed by each process head and approved by top management.
- To implement the above policy, Alpha Mead Development Company Ltd has established a Quality Management System with a commitment to ensure **the fulfillment of customer(s) satisfaction and all applicable requirements to which the organization subscribes.**
- AMDC shall monitor its performance regularly and strive for the **continual improvement of our services and the QMS processes** by constantly reviewing this policy for suitability during management review meetings.

This policy shall be available as documented information, communicated to all **interested parties** and consistently applied within the organization.

Damola Akindolire
Managing Director